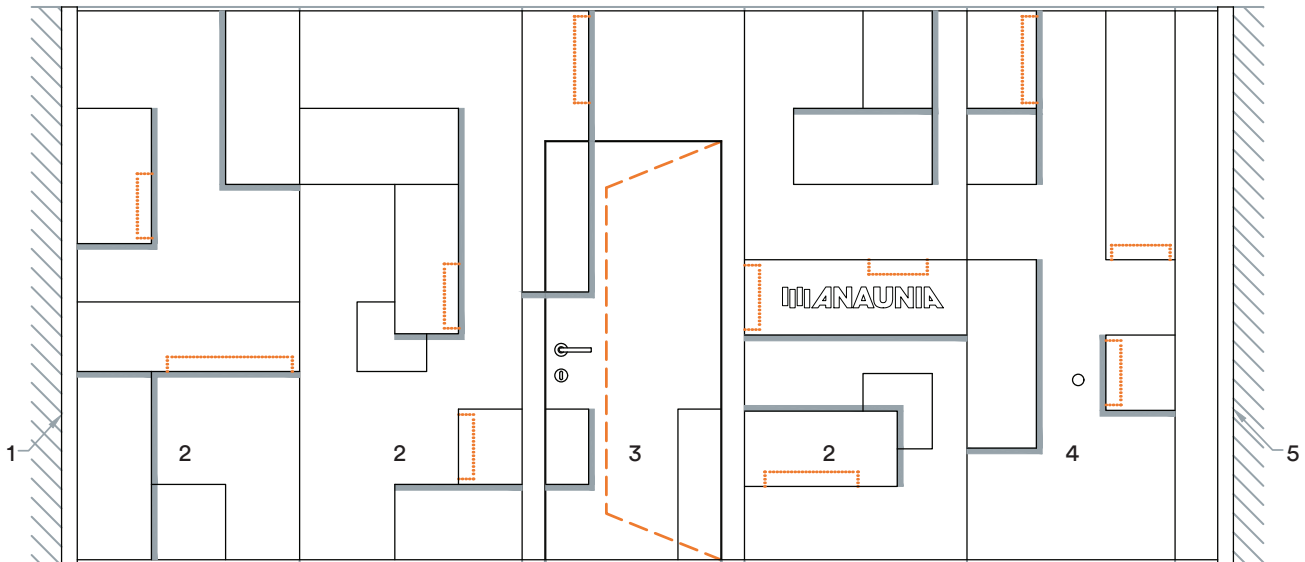


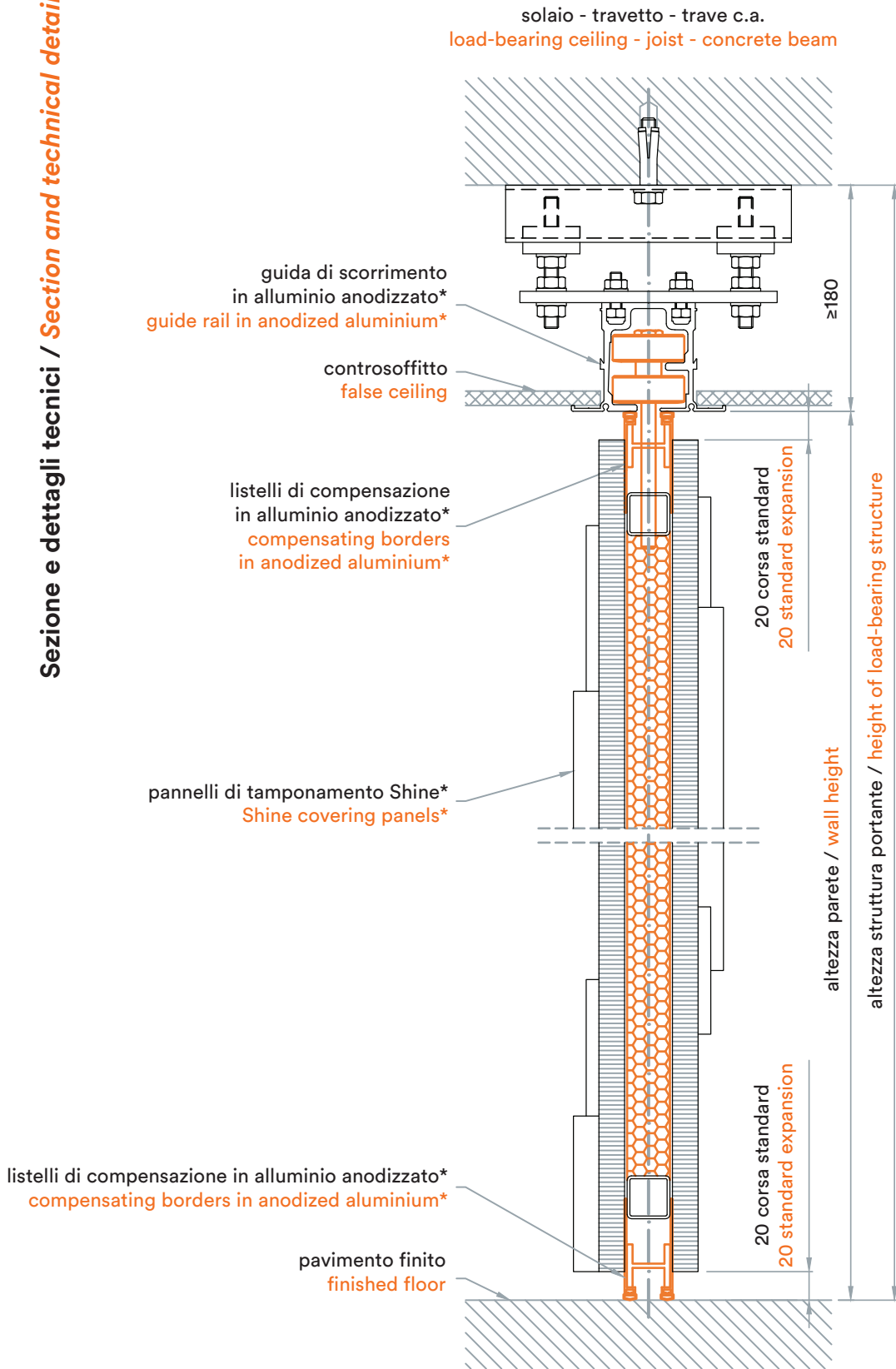
L = lunghezza parete / wall length
 P = n° moduli x 100 mm / no. of elements x 100 mm
 M = larghezza moduli / module width



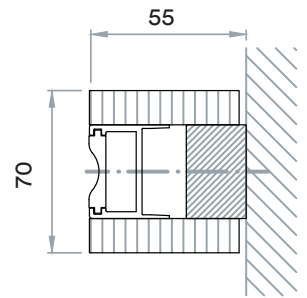
1 = montante di partenza / start jamb
 2 = modulo standard / standard element
 3 = modulo porta / door element
 4 = modulo telescopico / telescopic element
 5 = montante di arrivo / final jamb

NOTA = oltre ai sistemi di raccolta indicati si possono utilizzare le tipologie indicate per la parete PMI

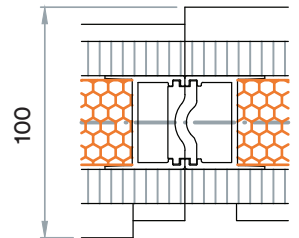
NOTE = in addition to the shown storage systems you can use the types listed for the PMI wall

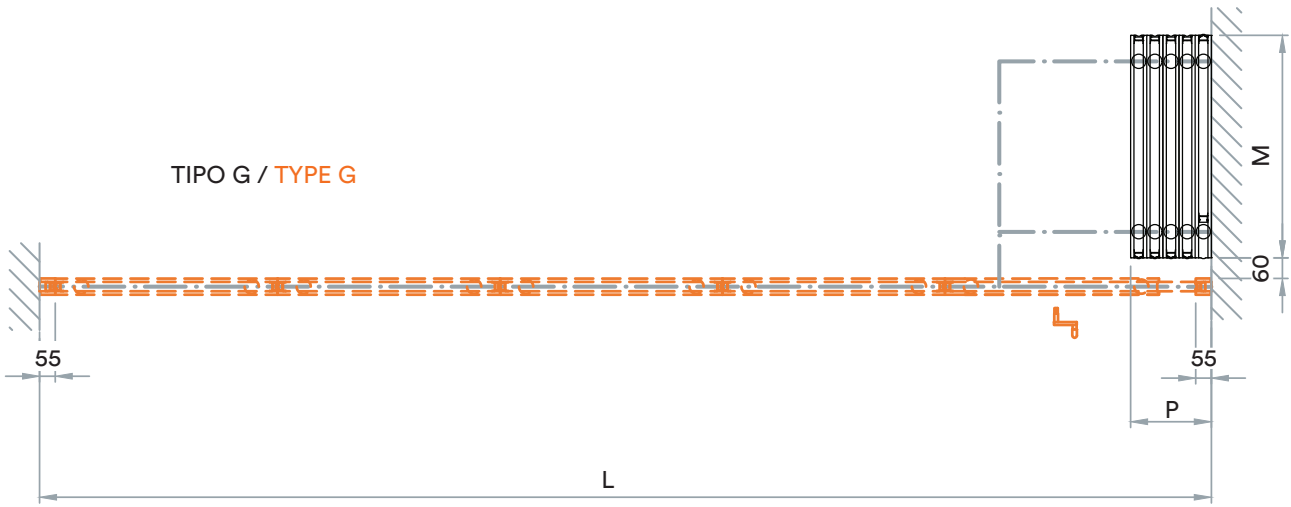
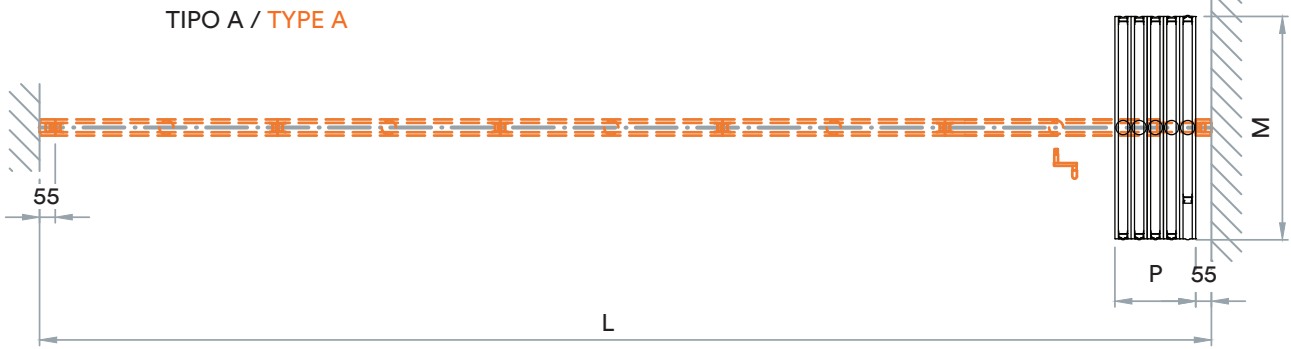


montante di partenza e arrivo
initial and final jamb

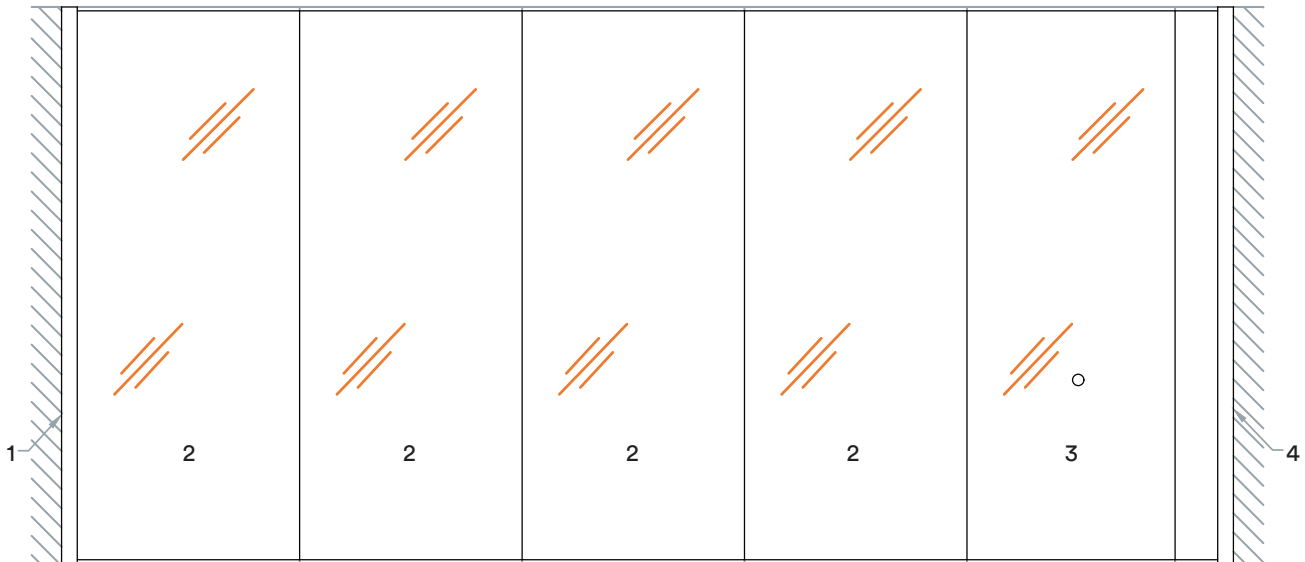


nodo con profili nascosti
knot detail of hidden profiles





L = lunghezza parete / wall length
 P = n° moduli x (45-75) mm / no. of elements x (45-75) mm
 M = larghezza moduli / module width

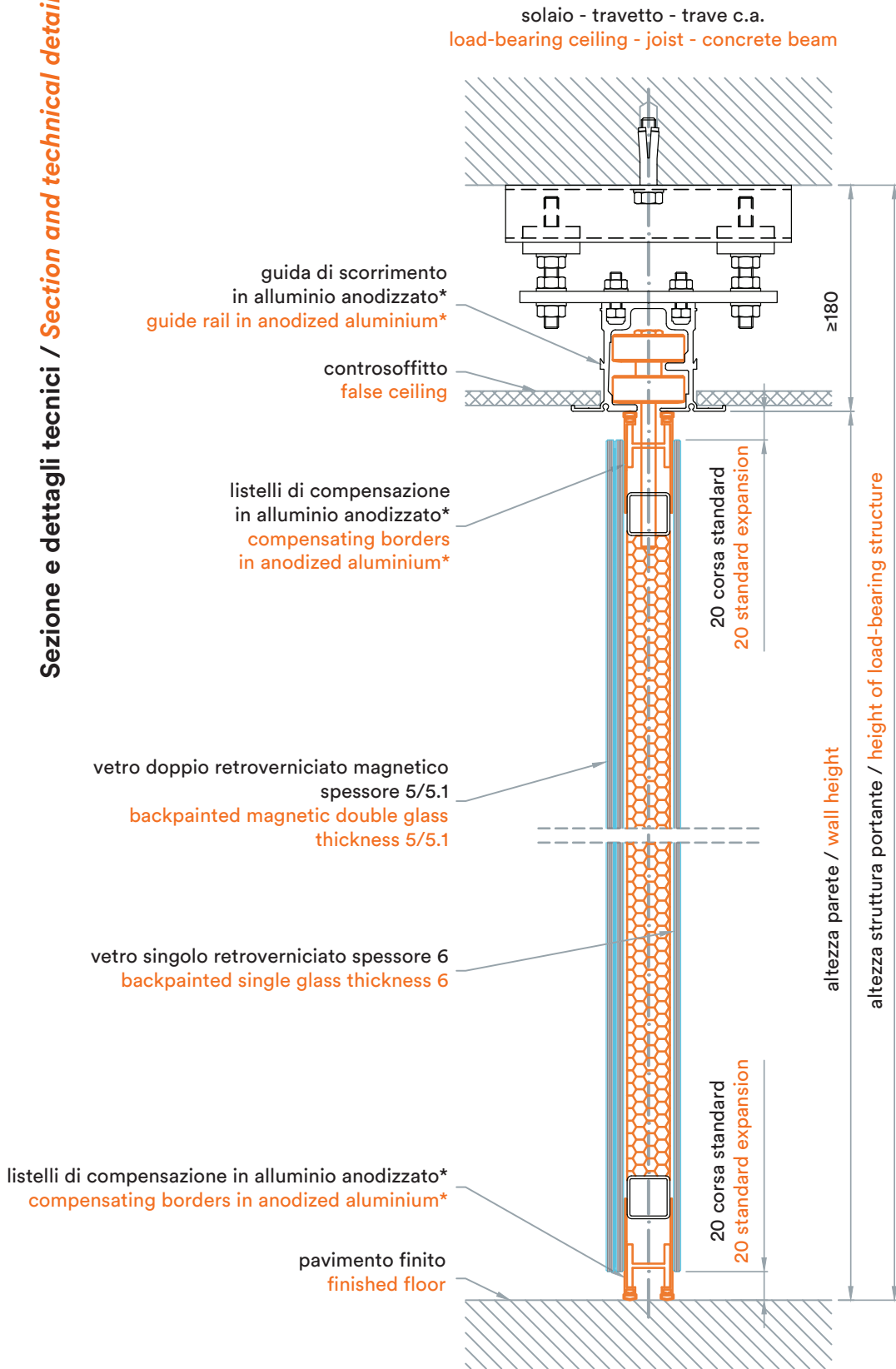


1 = montante di partenza / start jamb
 2 = modulo standard / standard element
 3 = modulo telescopico / telescopic element
 4 = montante di arrivo / final jamb

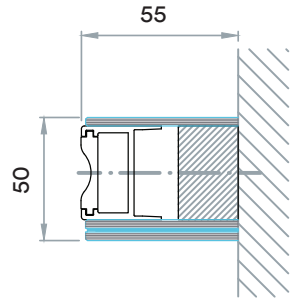
NOTA = oltre ai sistemi di raccolta indicati si possono utilizzare le tipologie indicate per la parete PMI
 NOTE = in addition to the shown storage systems you can use the types listed for the PMI wall

8.3 PMT

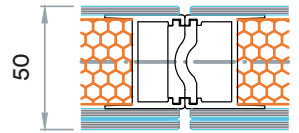
Riferimento quote in mm / Measurements given in mm



montante di partenza e arrivo
initial and final jamb

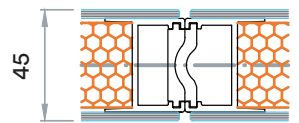


nodo con profili nascosti
knot detail of hidden profiles



Versioni / Versions

nodo con vetro singolo
knot detail with single glass



nodo con vetro doppio
knot detail with double glass

